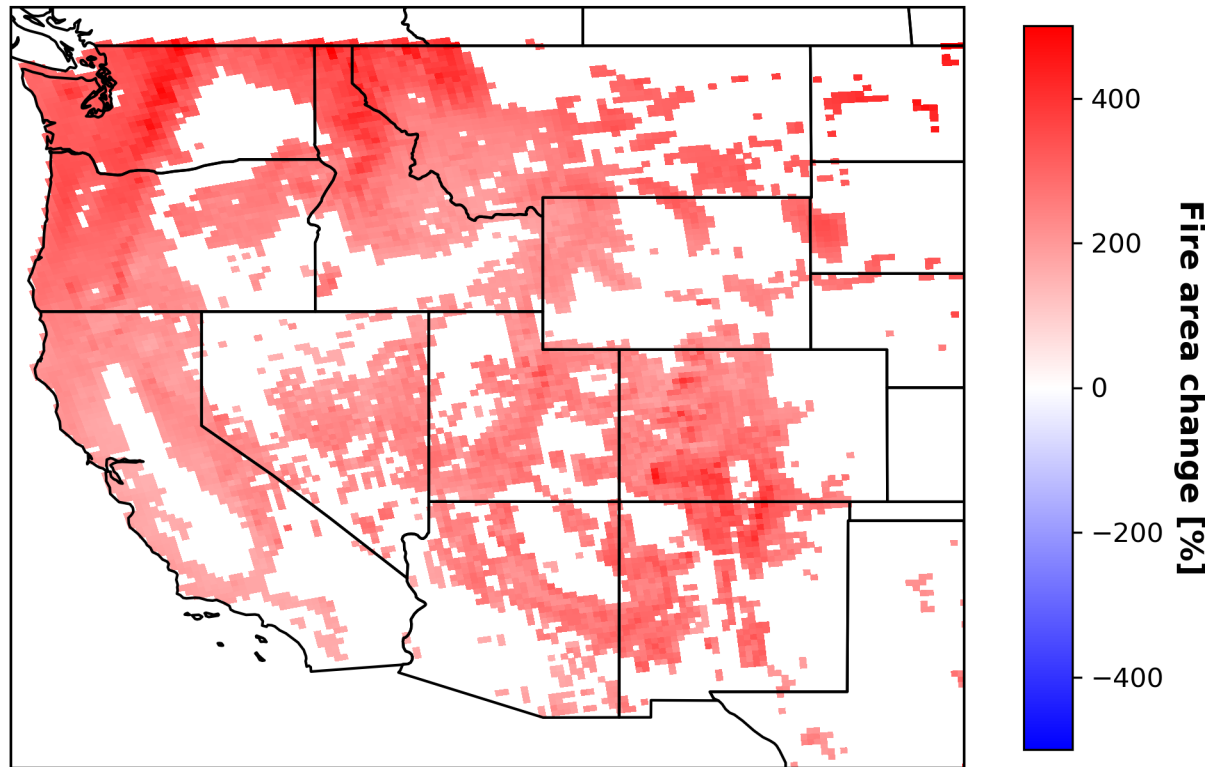


Developing tools to better predict how climate-driven wildfires will impact air quality

- Fire-initiated thunderstorms, i.e., pyrocumulonimbus (pyroCbs), pose as a significant challenge for fire management operations, while simultaneously expanding the coverage of wildfire smoke



Fire area change between 2011:2020 to 2060:2070



SSP3-7.0 “moderate” emission scenario

PyroCb Events for different climate scenarios

